

# Welcome to the East Area Planning Committee

- This planning committee meeting is held in public but it is not a public meeting.
- There will be an opportunity for the public to address the committee on each application.
- 19 If you wish to speak for or against a planning application, you need to have either requested it in advance, or hand in one of the available speaker forms, or speak to the clerk.
- Information on meeting protocol and conduct at the committee is set out in the Code of Practice.
- This is in the committee agenda just before the first planning application report.

## 20





[www.oxford.gov.uk](http://www.oxford.gov.uk)





[www.oxford.gov.uk](http://www.oxford.gov.uk)





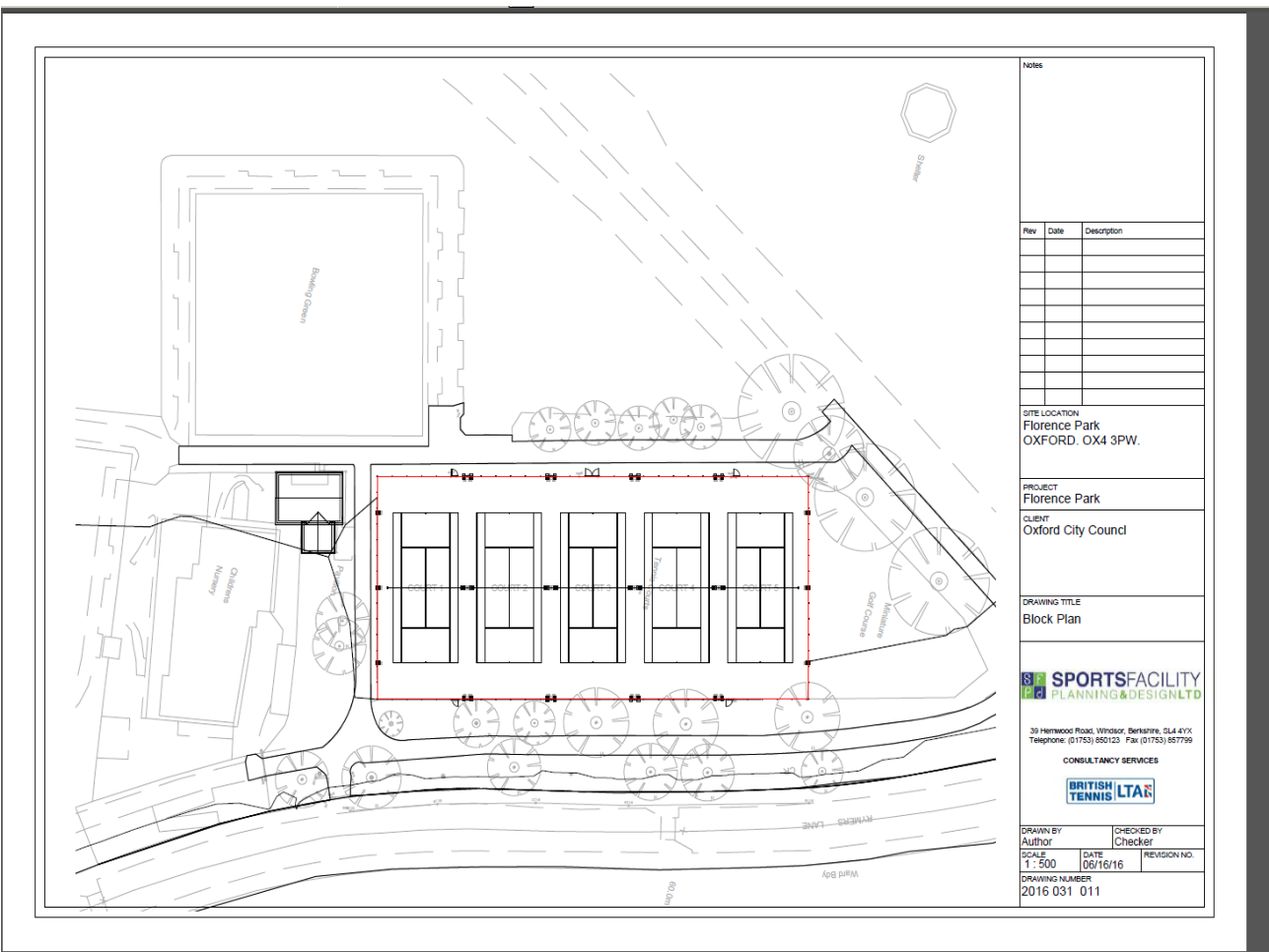
[www.oxford.gov.uk](http://www.oxford.gov.uk)





# Existing Block Plan

25



www.oxford.gov.uk





# Existing Layout



**www.oxford.gov.uk**



# 3D View 1



Notes		
Rev	Date	Description

**SITE LOCATION**  
Florence Park  
OXFORD, OX4 3PW.

**PROJECT**  
Florence Park

**CLIENT**  
Oxford City Council

**DRAWING TITLE**  
3d View 1

**SPORTSFACILITY**  
PLANNING & DESIGN LTD

39 HERWOOD ROAD, WINDSOR, BERKSHIRE, SL4 4YX  
Telephone: (01753) 600125 Fax: (01753) 607799

**CONSULTANCY SERVICES**

**BRITISH TENNIS** **LTA**

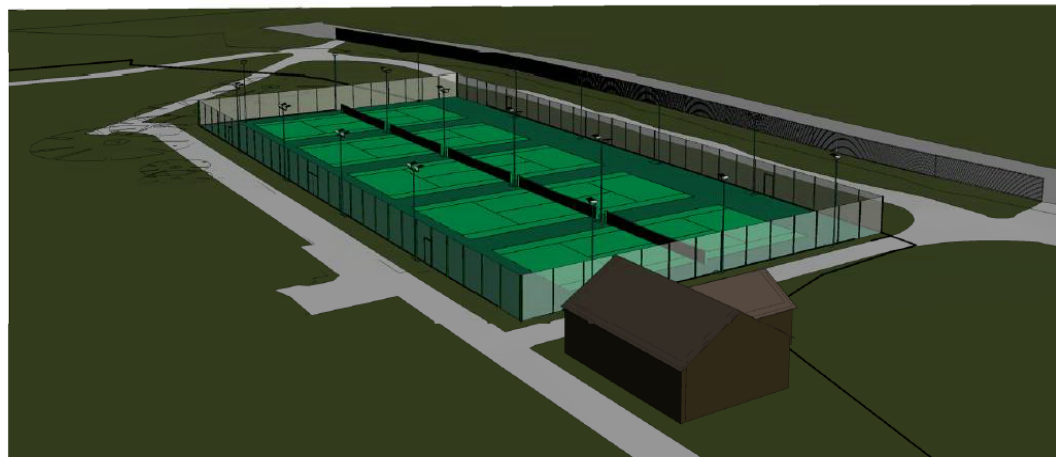
DRAWN BY L. West	CHECKED BY S.P.P.D.
SCALE	DATE 16/06/16
REVISION NO.	

DRAWING NUMBER  
2016.031 014



# 3D View 2

29



Notes

Rev	Date	Description

SITE LOCATION  
Florence Park  
OXFORD. OX4 3PW.

PROJECT  
Florence Park

CLIENT  
Oxford City Council

DRAWING TITLE  
3D View 2

**S F** SPORTSFACILITY  
**PD** PLANNING & DESIGN LTD

39 Hemwood Road, Windsor, Berkshire, SL4 4YX  
Telephone: (01753) 850123 Fax (01753) 857799

CONSULTANCY SERVICES



DRAWN BY  
L. West

CHECKED BY  
S.F.P.D.

SCALE

DATE  
16/06/16

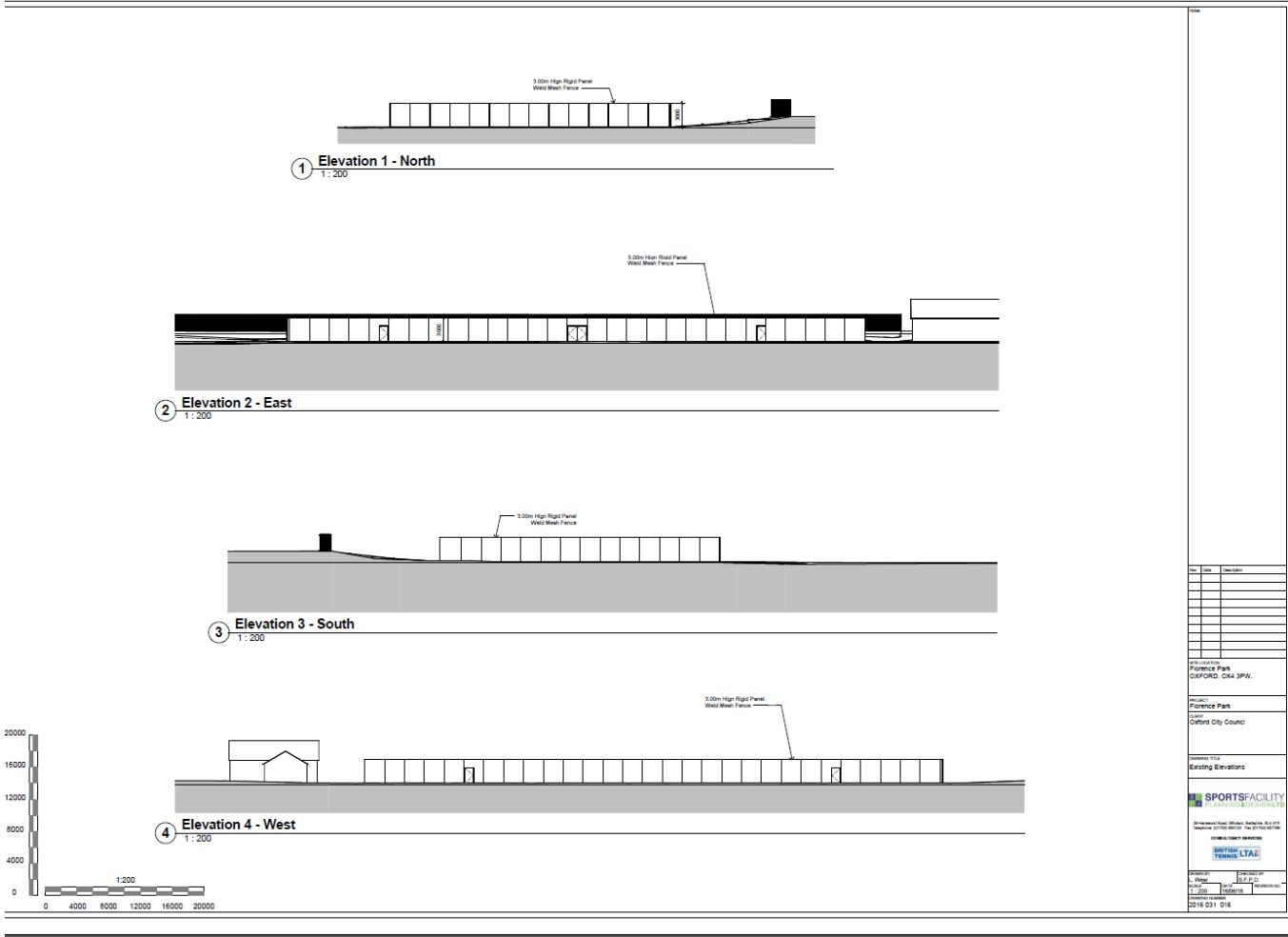
REVISION NO.

DRAWING NUMBER  
2016 031 015

[www.oxford.gov.uk](http://www.oxford.gov.uk)



# Existing Elevation



## 31



This page is intentionally left blank